



Oxford & District Branch Sponsor a Cat Cabin Scheme



PEGGY

Came to us with her three kittens. She was feral and very aggressive. Peggy has now tamed down but because of her previous life, she likes wide open spaces. She has a rather unpredictable temperament, which makes her difficult to home. She will therefore remain in our care.



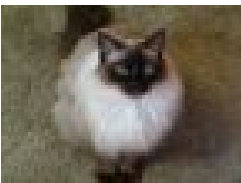
MEG

Was a semi-feral, who was rescued by us with her four kittens. Unfortunately, one did not survive. Meg was approximately three years at the time, and had already had about three litters, which we had been told had not survived. Meg was initially re-homed to a farm, as she was quite aggressive. A month after she went to the farm, she appeared back in the Fosterer's garden. Meg had made her own way back, across 5 miles of countryside! The remarkable thing was that she had never been out of her pen whilst she had been fostered. Meg also has a few medical issues, probably due to her rough start in life. She has an upper respiratory condition, which sometimes causes breathing problems, and she has 'inverted' ribs. Over the past few years, Meg has become much happier, allowing her fosterer to pick her up for a fuss.



SYLVIA

Had been living in an old army depot when she was found. She is still quite wild and will often spit at her fosterers. She does not like going out but prefers to be inside where she feels secure. Her favourite spot is sleeping in her fosterers bedroom where she will purr constantly.



HOLLY

Is a beautiful seal-point. When she first came into our care, she was in very poor condition with matted fur and refusing to eat. She had to be coaxed with a lot of patience to take food and drink but eventually trusted the fosterer enough, and is now in the condition you see today. Unfortunately, due to being ill-treated, she has behavioural problems, and also suffers from bad fits. This means she cannot be re-homed.



MUNCHIE

Came to us as the victim of an RTA—she had a fractured skull, broken jaw (which had to be reconstructed), and numerous cuts and scrapes all over her little body. She has made a good recovery, but the trauma has left her with a 'dodgy' nature. She is very nervous of hands, and although she loves attention will lash out with her sharp claws. Because of this, we have decided to keep her in our care where she is able to live her life as freely as possible.

For as little as £20 per year, you can sponsor one of our cat cabins. These are named after our 'special needs' cats as listed above. You will receive a Certificate with a yearly update on the special need cat(s) and all the other cats, we were able to support and house in that cabin, due to your generosity. Please underline the cat(s) you would like to sponsor a Cat Cabin for:

Peggy—Meg—Sylvia—Holly—Munchie

I enclose a payment of £ (min. of £20 made payable to Cats Protection, Oxford & District Branch)

Name
Address

Tel:
Email